

# Crime Prevention Through Design

Identify on the map with notes or drawings where the following needs to be incorporated:

- ◆ More lighting
- ◆ Promoting low-height landscaping
- ◆ Cameras for surveillance
- ◆ Artwork

## US-2 MULTIMODAL PROJECT PHASE 2 - AREA A



## US-2 MULTIMODAL PROJECT PHASE 2 - AREA B

Other ideas? Write them in here!

# Needed Pedestrian Crossings

Identify on the map where safe pedestrian crossings across US 2 are needed.



## US-2 MULTIMODAL PROJECT PHASE 2 - AREA A



## US-2 MULTIMODAL PROJECT PHASE 2 - AREA B

Place a sticker on any pedestrian crossing types you would feel safe to use to cross US 2.



High-Intensity Activated Crosswalk (HAWK)



Crosswalk Markings (Street Paint & Signs)



Rectangular Rapid-Flashing Beacons (RRFB)

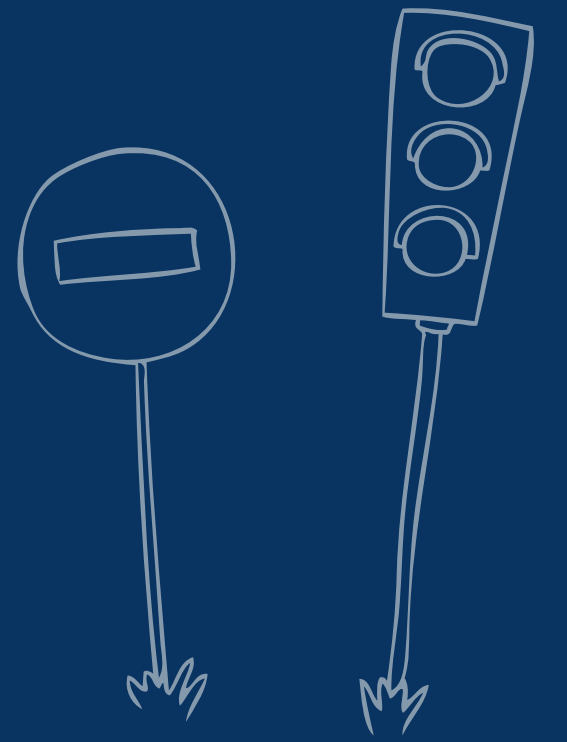


Illuminated Bollards

# US 2 Frequently Used Places and STA Bus Stop Needs

Use a red sticker dot to identify the locations on US 2 that you most frequently visit.

Use a blue sticker dot to identify the locations on US 2 where a bus stop would be most useful.



## US-2 MULTIMODAL PROJECT PHASE 2 - AREA A

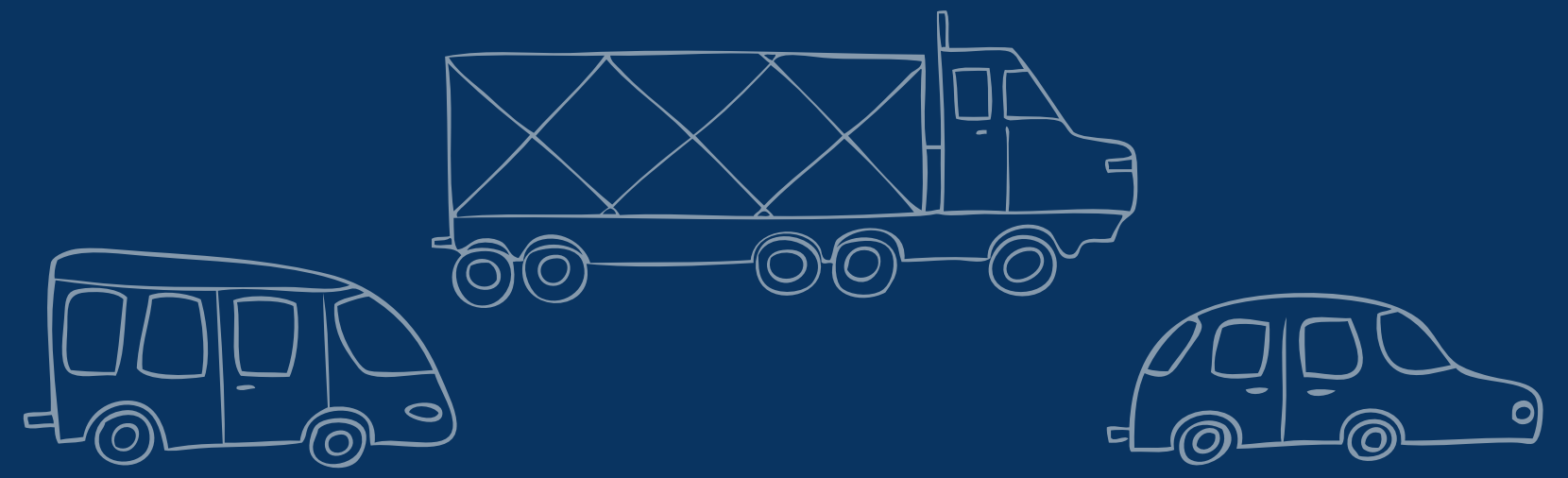


## US-2 MULTIMODAL PROJECT PHASE 2 - AREA B



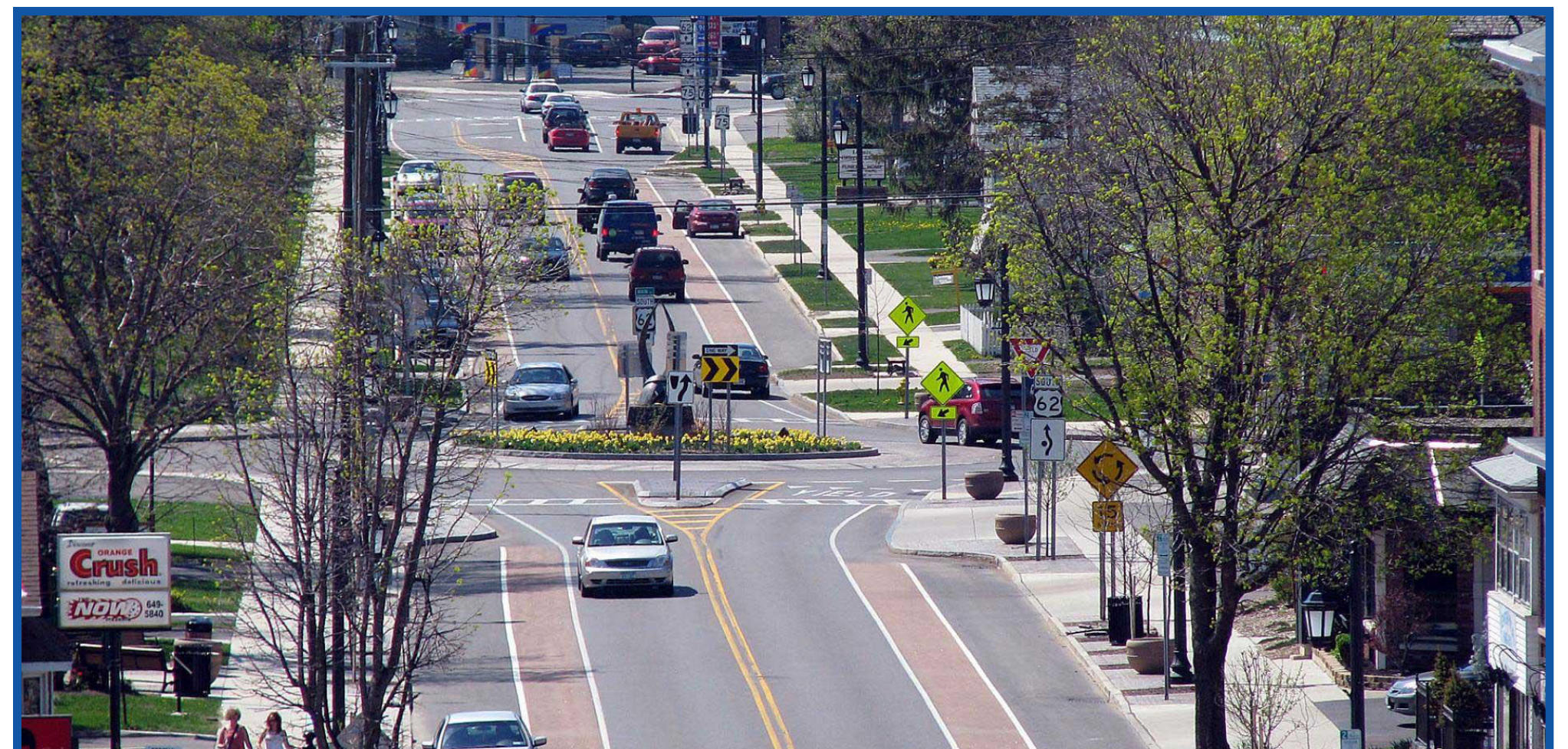
# Types of Speed Control

Place a sticker on any of the types of speed control you would like to see on US 2.



## MPH Digital Readers

Providing indication to drivers of what the posted speed limit is and how fast they are going.



## Narrower Travel Lanes

Reducing the width of a lane encourages people to slow down, and has been shown to reduce serious injuries on roads comparable to US 2 by as much as 90%.



## Channelizers

Can be used to separate lanes, guide vehicle and pedestrian traffic, and ensure uninterrupted traffic flow. They can increase driver awareness..



## Painted Speed Limits

Providing a visual of the speed limit on the road reminds people of the speed limit and encourages reduction in speed..

Share any experiences you have had that have felt unsafe due to high vehicle speeds along US 2.

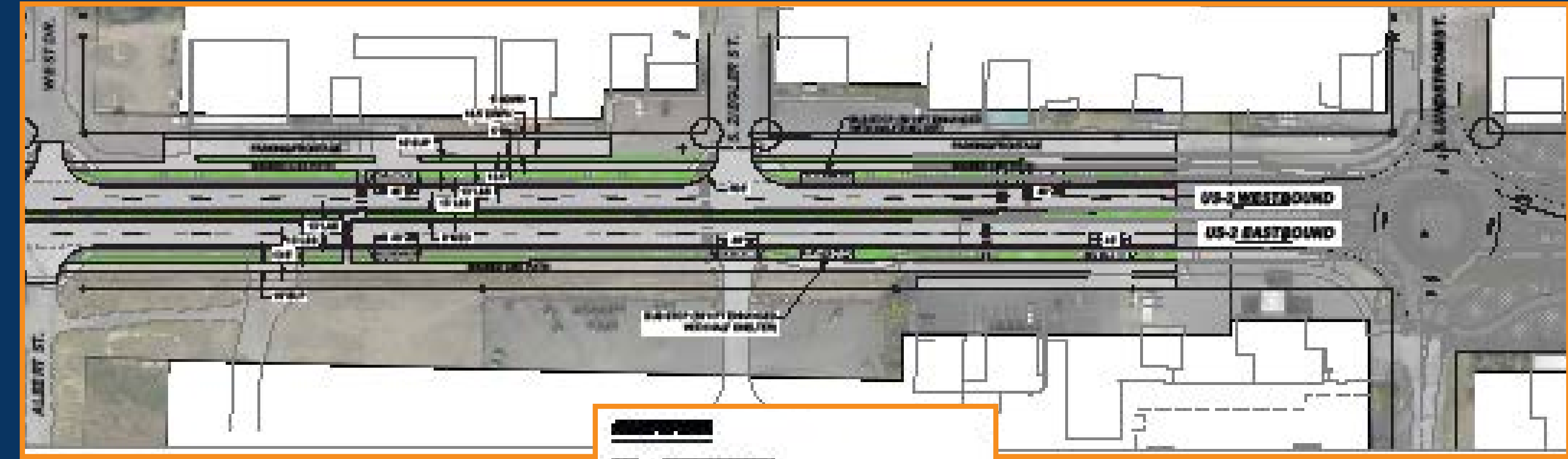
# Phase 2, 30% Design Concepts

S. Craig to West Dr. and Albert St.



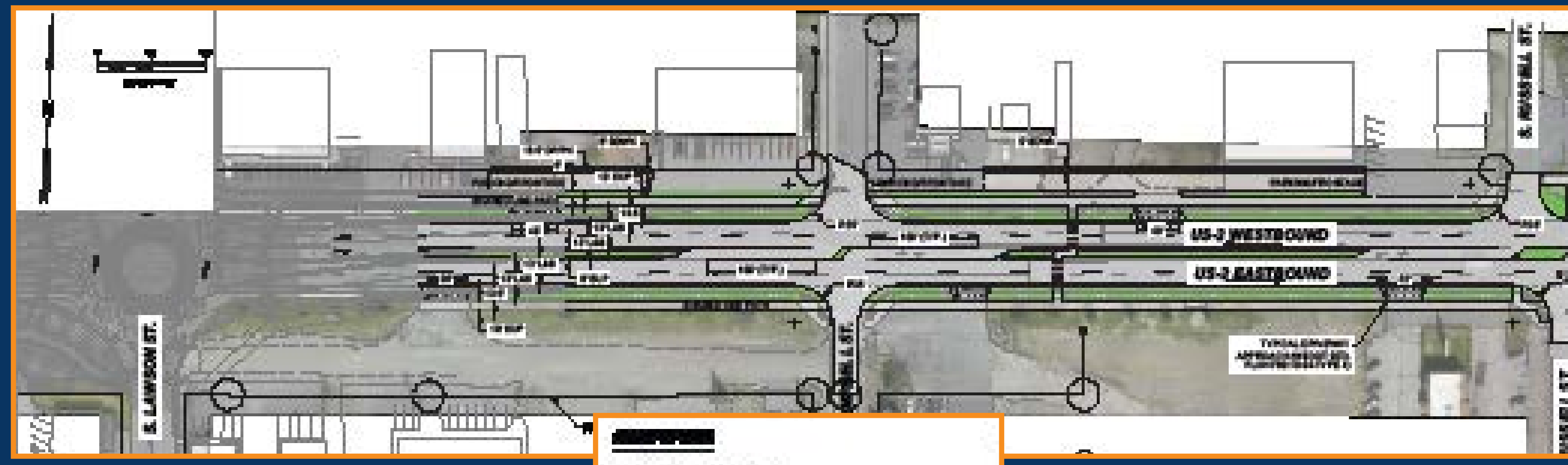
**LEGEND**  
 PP- SIDEWALK  
 LP- SIDE WALK OF B  
 BS- SIDE-SEPARATED BIKE LANE OF B  
 BPP- SIDEWALK OF BIKEWAY  
 BPL- BIKEWAY

West Dr. and Albert St. to S. Lundstrom St.



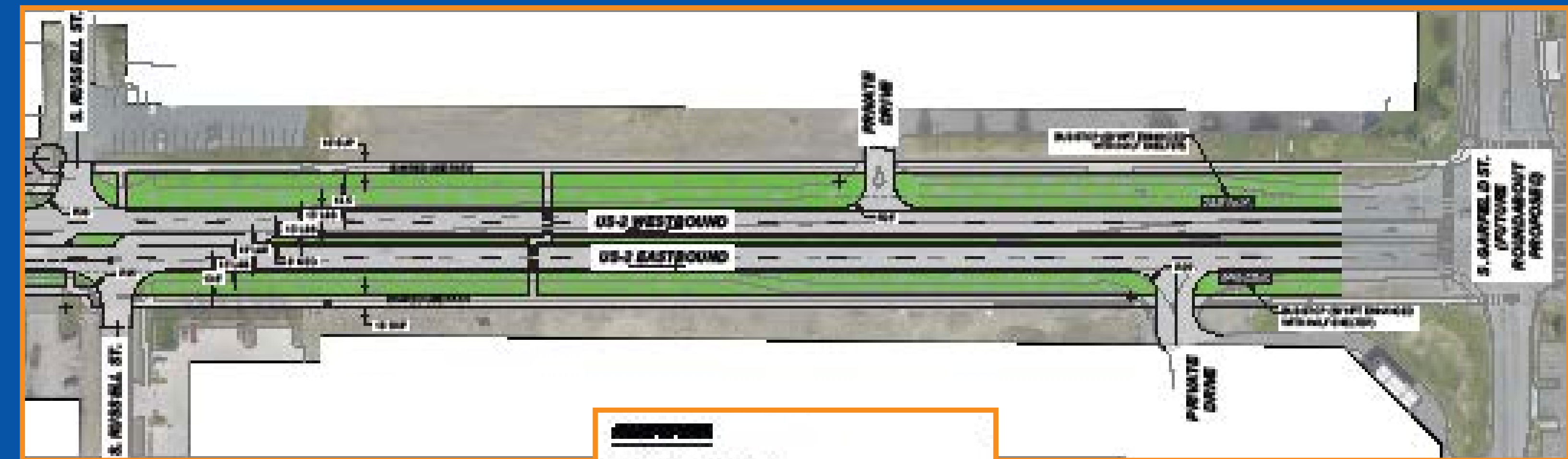
**LEGEND**  
 PP- SIDEWALK  
 LP- SIDE WALK OF B  
 BS- SIDE-SEPARATED BIKE LANE OF B  
 BPP- SIDEWALK OF BIKEWAY  
 BPL- BIKEWAY

S. Lawson St. to S. Russell St.



**LEGEND**  
 PP- SIDEWALK  
 LP- SIDE WALK OF B  
 BS- SIDE-SEPARATED BIKE LANE OF B  
 BPP- SIDEWALK OF BIKEWAY  
 BPL- BIKEWAY

S. Russell St. to S. Garfield St.



**LEGEND**  
 PP- SIDEWALK  
 LP- SIDE WALK OF B  
 BS- SIDE-SEPARATED BIKE LANE OF B  
 BPP- SIDEWALK OF BIKEWAY  
 BPL- BIKEWAY

