

Wawein ko nan bobrae kauotata ko remaron jelet armej ako jerbal ko renana enot koot im edrob armej

Jeje ak jina ion map in nan kalikar ia ej aikuj wor oktak ak kakobaba ilo ial eo

- ◆ Lon lok toma nan kamram ial eo
- ◆ Lomnak ko lemaantak bwe en wor kein kainoknok ko re kadu ion ial eo
- ◆ Camera ko rej mijok armej nan kojparok im bobrae elon men ko renana enot koot, manman armej ak kakure em ko im wa ko
- ◆ Jina ko nan kainoknok ak komman an aibojoj ial eo

US-2 MULTIMODAL PROJECT PHASE 2 - AREA A



US-2 MULTIMODAL PROJECT PHASE 2 - AREA B

Elon ke bar jet lomnak ko remman kwokonan le maantak nan jiban kakonmanman ial in? Jouj im likit jabdewot lomnak ko kwoj loe emman ijin!

Aikuj wor jikin an armej kirooj

Kalika ion map in ia eo
kwoj loe aikuj wor jikin
enaj emman nan an armej
kirooj ion ial ne US 2



US-2 MULTIMODAL PROJECT PHASE 2 - AREA A



US-2 MULTIMODAL PROJECT PHASE 2 - AREA B

Ilik kadrep aolep jikin kirooj ko kwoj loe ke enaj emman im eban kauotata nan kirooj ion ial ne US 2



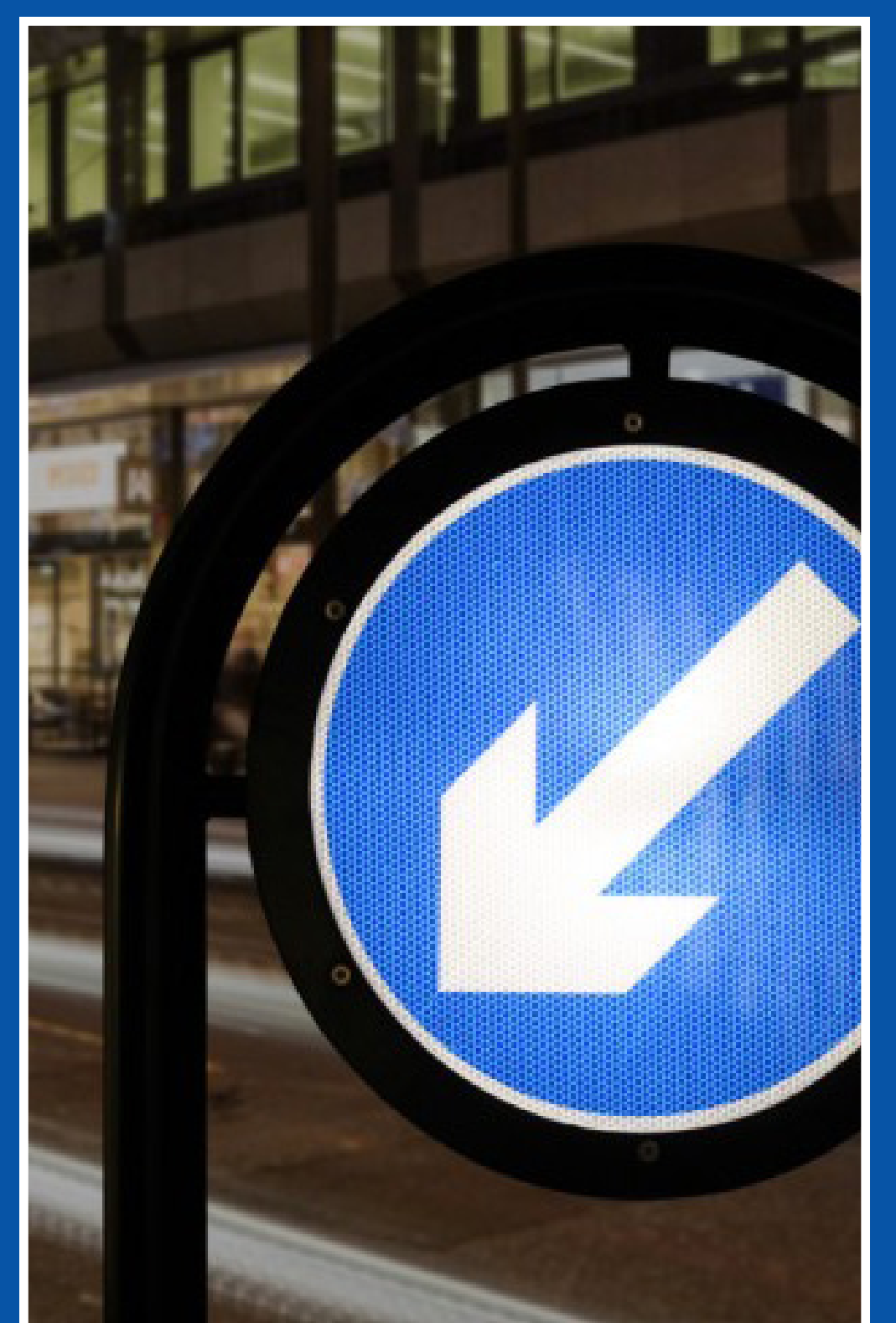
High-Intensity Activated Crosswalk (HAWK)



Crosswalk Markings (Street Paint & Signs)



Rectangular Rapid-Flashing Beacons (RRFB)

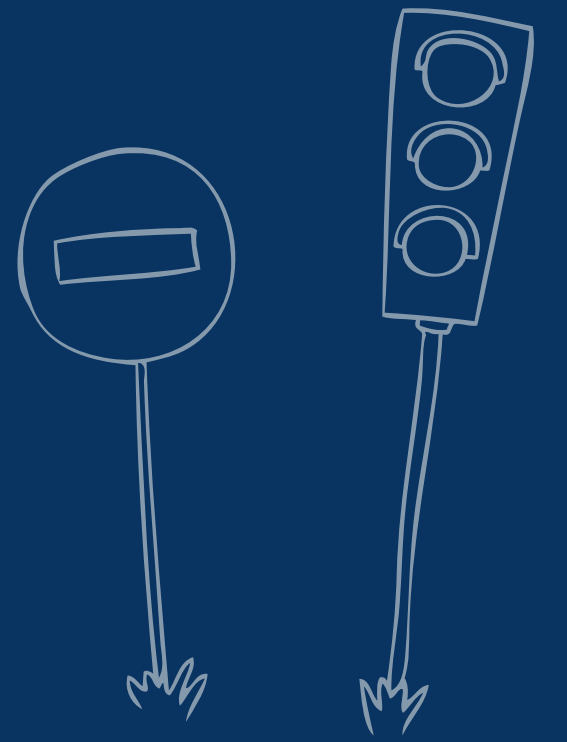


Illuminated Bollards

Ijoko eke kojerbal iloan ial eo US 2 im aikuj wor jikin an baj ko an STA bojrak

Kojerbal kadrep ko kalar **buroro** nan kokalle ia ko ion ial ne US 2 eke am kojerbale ak bojrak ie

Kojerbal kadrep ko kalar **bulu** nan kokalle ia ko ilo ial ne US 2 kwoj loe ke ej aikuj wor jikin an baj bojrak ie



US-2 MULTIMODAL PROJECT PHASE 2 - AREA A



US-2 MULTIMODAL PROJECT PHASE 2 - AREA B

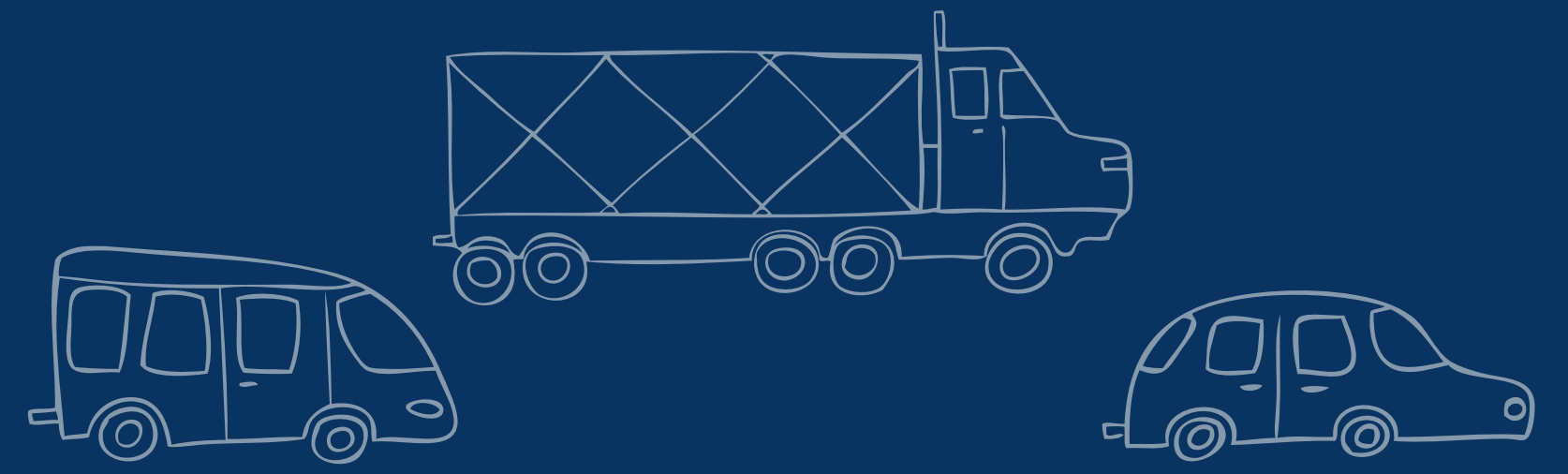


Kakomanman ko nan ial eo US 2 im armej rej kojerbal nan elon makitkit ko enot etetal, bajjikol im kator ion
Bukon in Airway Heights | Maaj 2024

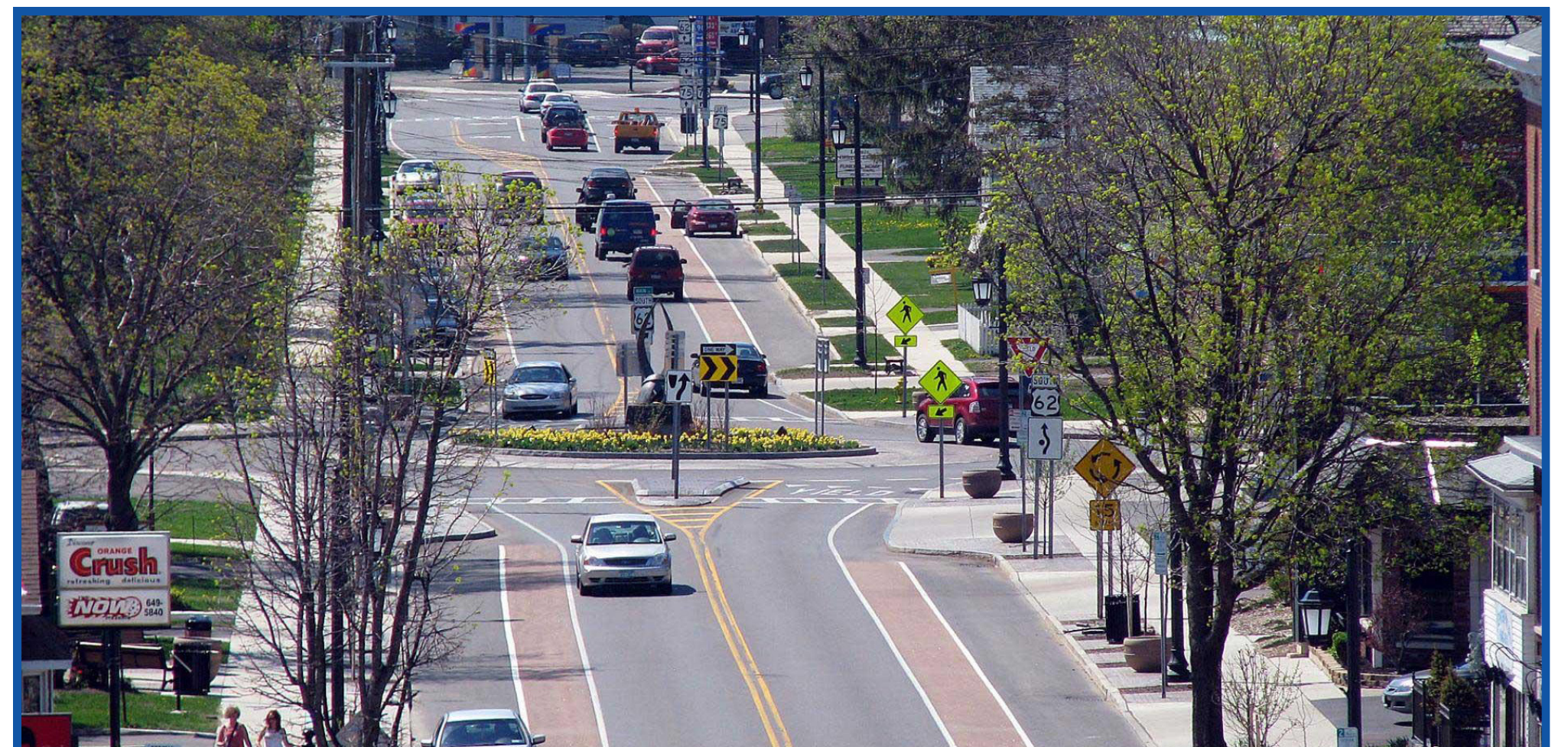


Wawein ko nan kwalok eo jonan ium in am kator

Ilik kadrep ilo aolep sign ko kwokonan loe ilo ial ne US 2.



Meta in kwalok eo jonanim ium in am kator
 kajutak meta in kwalok jete jipit in jonan eo kwoj aikuj lor e kab eo jonan ium in am kator.



Jonan drebakbak in lane kan ilo
 Kaidriklok lane ko ilo ial ekoman an armij kadriklok aer buul im emoj an walok ke 90% in an drilok joran ko relap ilo ial rot kein an US 2.



Cone ko ilo ial eo
 emaron kojepel ial ko, tol armij im wa ko jen tirapik im kalaplok an ritor ro maron lo lak ijon.

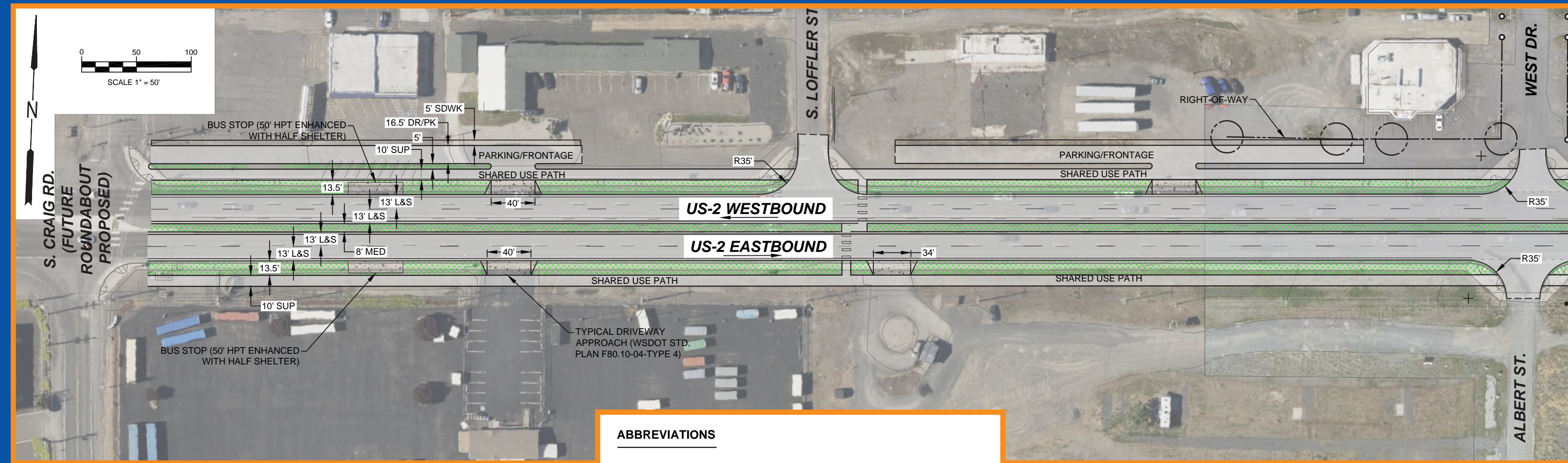


Uno ko ion ial ko nan kwalok eo jonan jipit in an juon maron ettor ion ial eo
 ilo ad ilik sign in jipit limit ilo ial ko ekoman an armij lor jonan ium in aer kator.

kwalok jot ian men ko emoj am ioni im kwoj enjake ke ekautata ilo an lukun ium an wa ko ettor ion US 2.

Jerbai ko tokelik kein karuo

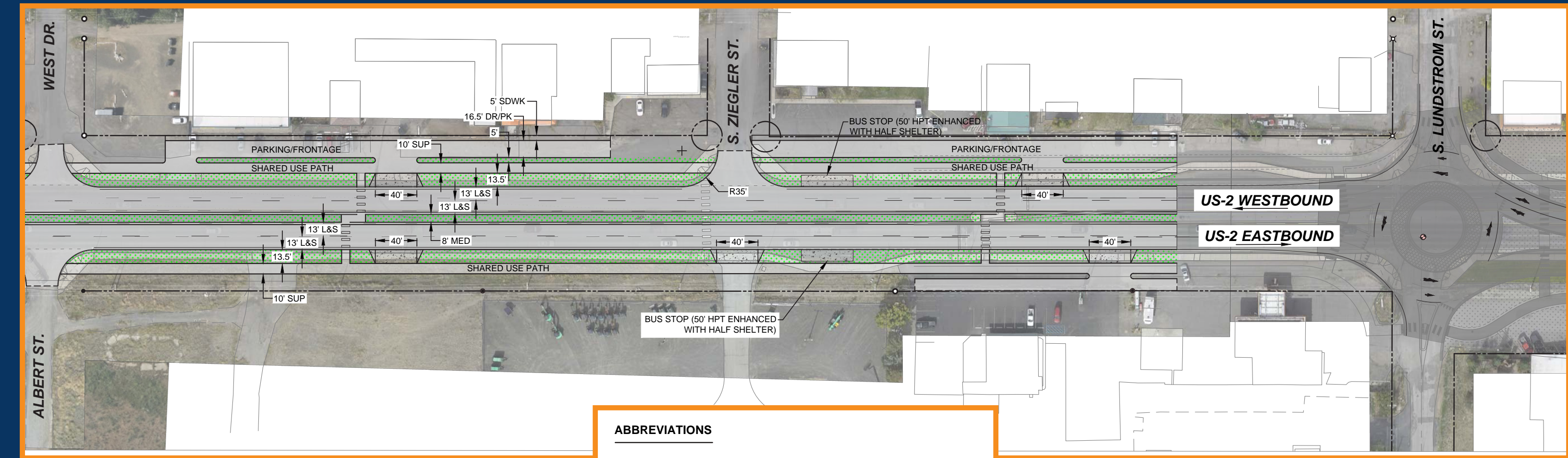
S. Craig nan W. Dr. im nan Albert St.



ABBREVIATIONS

- SUP - SHARED USE PATH
- L&S - LANE (11') AND SHY (2')
- MED - MEDIAN (MEASURED FACE OF CURB TO FACE OF CURB)
- DR/PK - DRIVE AISLE (9') AND PARKING (7.5')
- SDWK - SIDEWALK

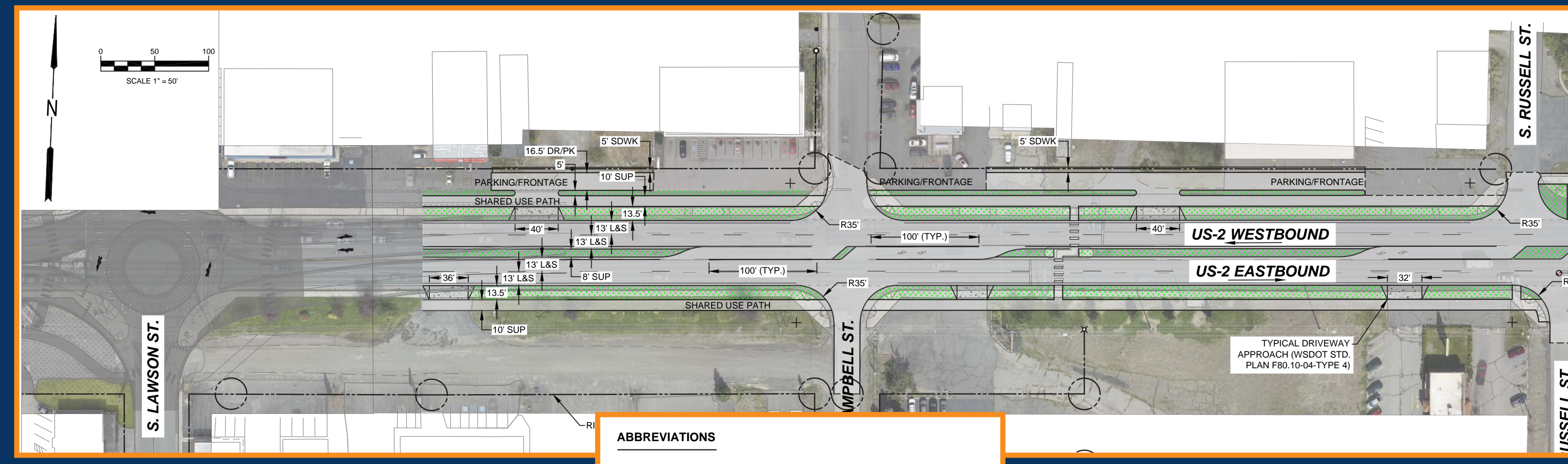
Ial eo kotoan West Dr. im Albert St nan S. Lundstrom St.



ABBREVIATIONS

- SUP - SHARED USE PATH
- L&S - LANE (11') AND SHY (2')
- MED - MEDIAN (MEASURED FACE OF CURB TO FACE OF CURB)
- DR/PK - DRIVE AISLE (9') AND PARKING (7.5')
- SDWK - SIDEWALK

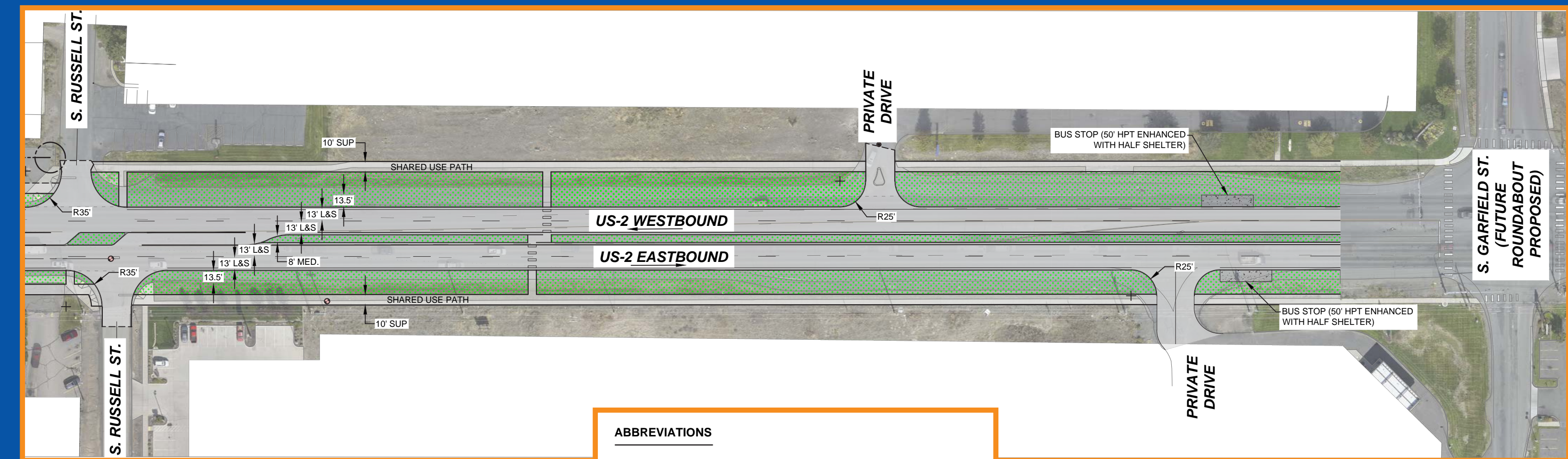
S. Lawson St. nan S. Russell St.



ABBREVIATIONS

- SUP - SHARED USE PATH
- L&S - LANE (11') AND SHY (2')
- MED - MEDIAN (MEASURED FACE OF CURB TO FACE OF CURB)
- DR/PK - DRIVE AISLE (9') AND PARKING (7.5')
- SDWK - SIDEWALK

S. Russell St. nan S. Garfield St.



ABBREVIATIONS

- SUP - SHARED USE PATH
- L&S - LANE (11') AND SHY (2')
- MED - MEDIAN (MEASURED FACE OF CURB TO FACE OF CURB)
- DR/PK - DRIVE AISLE (9') AND PARKING (7.5')
- SDWK - SIDEWALK

Kakomanman ko nan ial eo US 2 im arnej rej kojerbal nan elon makitkit ko enot etetal, baijokol im kator ion Bukon in Airway Heights | Maaj 2024